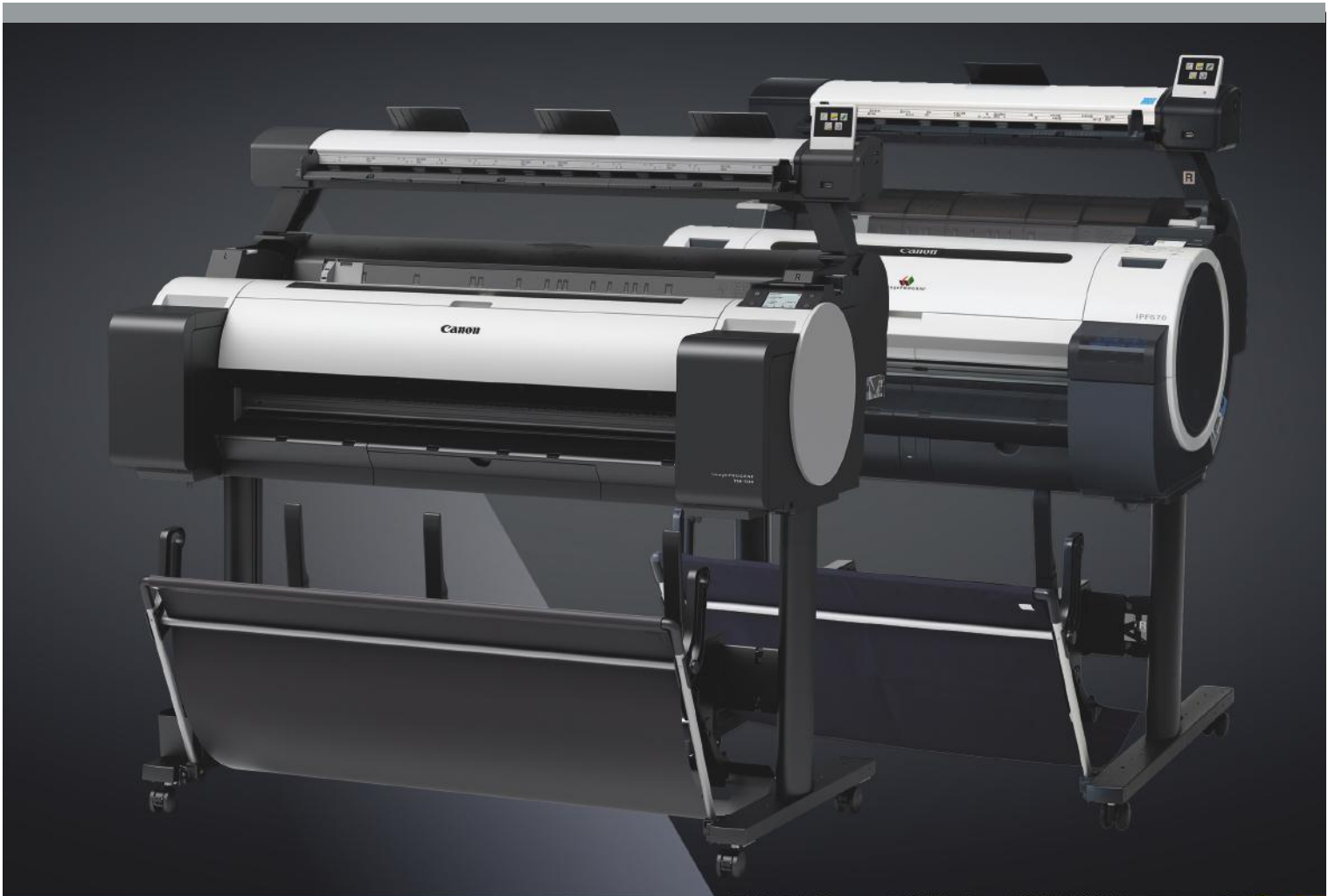




imagePROGRAF

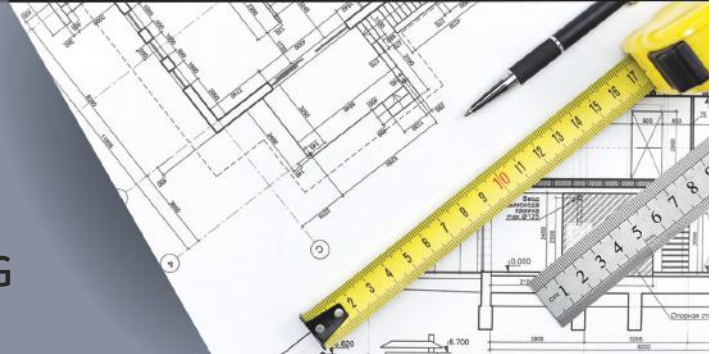
Lei Series

SCAN-TO-COPY/FILE/CLOUD



TECHNICAL  
DOCUMENTS

MFP LARGE-FORMAT IMAGING





Introducing the new, entry-level Multifunction Printers: the imagePROGRAF TM-300 MFP L36ei, TM-200 MFP L24ei, iPF770 MFP L36ei, and iPF670 MFP L24ei Large-Format MFP systems

Affordable and easy-to-use, scan-to-copy/file/cloud Multifunction Printer (MFP) solutions



Designed for the low-volume and entry-level user, these MFP solutions offer user-friendly, scan-to-copy/file/cloud solutions for architects, engineers, consulting firms, small offices, and K-12 schools that require a minimal learning curve when it comes to new equipment.

## FEATURES

### Scanner

- The 36" L36ei scanner weighs approx. 14.5 lb. and the 24" L24ei scanner weighs approx. 11.6 lb.; both are lightweight and compact
- Intuitive touch screen with easy-to-identify picture identification functions
- SingleSensor Scanning Technology
- Fast first-copy-out time

### Simple Operation

- "Green Button" scan-to-copy functionality
- No PC required

### Easy Installation

- Scanner is easily integrated with the printer
- Compact MFP takes up minimal office space

### Printer

- TM-300 36" and TM-200 24" pigment ink models
- iPF770 36" and iPF670 24" dye/pigment ink models

# imagePROGRAF

At a low cost, small office environments and schools can now afford an MFP.

## SCANNER

These scanners, utilizing SingleSensor Technology,\* have simple, integrated control panels that allow users to operate the scanner with a simple push of a button. This technology helps provide consistent and better color accuracy with more detail in the shadows and highlights than a staggered CIS array scanner.

### • Scan-to-Copy

- Three quality modes: Draft, Standard, and Best
- Settings include Auto Crop Borders, Number of Copies, Brightness, Black Point, and White Point
- Optical resolution of up to 600 dpi
- Media thickness up to .5 mm
- Scan single documents into a multipage PDF

### • Scan-to-USB Thumb Drive

- TIFF file format
- TIFF, JPEG, PDF, PDF/A, and Multipage PDF files formats (via ScanApp Lei)

### • Scan-to-ScanApp Lei (PC only)\*\*

- TIFF, JPEG, PDF, PDF/A, and Multipage PDF file formats

## PRINTER

With the option of a 36" or 24" pigment ink printer or a 36" or 24" dye/pigment ink printer, you now have the ability to choose the printer that best fits your needs.

### • TM-300 MFP L36ei/TM-200 MFP L24ei

- 5-color TD Pigment Ink System
- Security solutions
- Color, touch-screen operation panel on the printer

### • iPF770 MFP L36ei /iPF670 MFP L24ei

- 5-color dye/pigment reactive ink system
- 130 ml ink tanks
- Economy Print mode

## SOFTWARE AVAILABLE

**Direct Print & Share:**† Canon's cloud portal solution allows for the sharing and batch printing of JPEG, TIFF, PDF, and HP-GL/2 files from almost anywhere in the world. Shortcut printing capability has been added for drag-and-drop printing as well as scan-to-cloud capabilities.

**PosterArtist Lite:** Poster creation software gives you all the tools needed to design and output impressive, large-format signs and banners (PC only).

**Print Plug-in for Microsoft® Office:** Allows for users of any skill level to print posters or banners directly from Microsoft® Excel®, PowerPoint®, and Word.

**Accounting Manager:** This management tool easily helps track costs and allocate consumable expenses to projects. It also allows you to track print jobs by user to calculate ink and media (PC only).

**Free Layout Plus: New!** Nest, tile, and create custom layouts before printing your files with this print utility. Use the Plug-in feature to print directly from Microsoft office programs. Compatible with the TM-300 and TM-200 models only.



\* SingleSensor Technology Assembly means that multiple sensors are contained in one assembly device.

\*\* Minimum PC specification: Windows 7/8 - 32-bit/Intel Celeron, Core-Duo, Core-2-Duo or 2.8 GHz Hyper-Threading (HT) or AMD Dual-Core processors/2 GB RAM/High speed 7,200rpm Serial ATA (SATA) HDD with minimum 2 GB for applications and 20 GB free for images.

† Direct Print & Share comes embedded with the imagePROGRAF TM-300 MFP L36ei, TM-200 MFP L24ei, iPF770 MFP L36ei, and iPF670 MFP L24ei large-format printers, and is also available as a free download at [usa.canon.com/downloads](http://usa.canon.com/downloads). You must sign up for the Google™ service separately. This service is subject to Google's terms and conditions. Based on Google's current services. Subject to change at Google's discretion.

Note: The imagePROGRAF MFP Lei systems contain multiple components, some of which are manufactured by third parties. To the extent that such third-party offerings come with limited warranties, such limited warranties are hereby passed to the purchaser, and Canon shall have no obligation or any liability with respect to such third-party offerings.

# SPECIFICATIONS

## TM-300/200 PRINTER

### Print Head

PF-06

### Ink Type

**Pigment:** Cyan (C), Magenta (M), Yellow (Y), Black (BK), Matte Black (MBK)

### Ink Tank

**PFI-120 (130 ml):** C, M, Y, BK, MBK  
**PFI-320 (300 ml):** C, M, Y, BK, MBK

### Ink Tank Capacity

**Starter:** MBK (130 ml), BK, C, M, Y (90 ml)  
**Replacement:** 130 ml or 300 ml

### Ink Supply Method

Tubing System with Sub-ink Tanks for Continuous Ink Supply

### Media Thickness

0.07 - 0.8 mm (2.8 - 31.4 mil)

### Media Core Sizes

2" and 3" Core (Adapter Included)

### Maximum Roll Outer Diameter

5.9" (150 mm)

### Output Media Bin

Basket

### Printing Software

imagePROGRAF Printer Driver for Windows®/Mac®,  
Print Driver Extra Kit for Windows/Mac  
[Free Layout, Color imageRUNNER® Enlargement Copy (PC only), Advanced Preview], Print Plug-in for Microsoft Office (PC only), Optimized Module for AutoCad® for Windows, Direct Print & Share (PC only), Status Monitor for Windows, Print Monitor for Mac, Media Configuration Tool, PosterArtist Lite for Windows

### Operating System

Windows 7 (32/64 bit), Windows 8.1 (32/64 bit), Windows 10 (32/64 bit), Windows Server 2008 R2, (32/64 bit), Windows Server 2012 (64 bit), Windows Server 2012 R2 (64 bit), Windows Server 2016 (64 bit), Macintosh OS X v10.10.5-v10.12x

### Print Language

SG Raster (Canon Proprietary), HP-GL/2, HP RTL, JPEG

### Interface

USB 2.0 Hi-speed, 10/100/1000Base-T/TX, Wireless LAN (IEEE 802.11 b/g/n)\*\*

### Dimensions (H x W x D) and Weight (with Stand and Basket)

**TM-300**  
41.8" x 51" x 34.3" (SD-31: with basket open)  
Weight: 130 lb. (SD-31, roll holder included, no inks, no print heads)

**TM-200**  
41.8" x 38.7" x 34.3" (SD-22: with basket open)  
Weight: 112 lb. (SD-22, roll holder included, no inks, no print heads)

### User Replaceable Items

Ink Tank (PFI-120/PFI-320)  
Print Head (PF-06)  
Maintenance Cartridge (MC-31)  
Cutter Blade (CT-08)

## IPF770/670 PRINTER

### Print Head

PF-04

### Ink Type

**Dye:** Cyan (C), Magenta (M), Yellow (Y), Black (BK)  
**Pigment:** Matte Black (MBK)

### Ink Tank

PFI-107: C, M, Y, BK, MBK

### Ink Tank Capacity

**Starter:** 90 ml; **Replacement:** 130 ml

### Ink Supply Method

Tubing System with Sub-ink Tanks for Continuous Ink Supply

### Media Thickness

0.07 - 0.8 mm (2.8 - 31.4 mil)

### Media Core Sizes

2" and 3" Core (Adapter Included)

### Maximum Roll Outer Diameter

5.9" (150 mm)

### Output Media Bin

Basket

### Printing Software

imagePROGRAF Printer Driver for Windows®/Mac®,  
Print Driver Extra Kit for Windows/Mac  
[Free Layout, Color imageRUNNER® Enlargement Copy (PC only), Advanced Preview], Print Plug-in for Microsoft Office (PC only), Optimized Module for AutoCad® for Windows, Direct Print & Share (PC only), Status Monitor for Windows, Print Monitor for Mac, Media Configuration Tool, PosterArtist Lite for Windows

### Operating System

Windows XP (32-bit), Server 2003 (32/64-bit), Server 2008 (32/64-bit), Server 2012, (64-bit), Windows Vista® (32/64-bit), Windows 7 (32/64-bit), Windows 10 (32/64-bit), Macintosh OS X 10.6.8-10X

### Print Language

GARO (Canon Proprietary), HP-GL/2, HP RTL

### Interface

USB 2.0 Hi-Speed, 10/100/1000Base-T/TX

### Dimensions (H x W x D) and Weight (with Stand and Basket)

**IPF770**  
42" x 51" x 34" (ST-33: with basket open)  
Weight: 155.2 lb. (ST-33, roll holder included, no inks, no print heads)

**IPF670**  
42" x 39" x 34" (ST-26: with basket open)  
Weight: 128.2 lb. (ST-26, roll holder included, no inks, no print heads)

### User Replaceable Items

Ink Tank (PFI-107 MBK, BK, C, M, Y)  
Print Head (PF-04)  
Maintenance Cartridge (MC-10)

## Lei SERIES SCANNER\*\*

### Scan Speed\*

**24-bit Full Color @ 200 dpi:** 1" per second  
**8-bit Grayscale and Monochrome @ 200 dpi:** 3" per second

### Scan Modes

16.7-million Color RGB (24-bit)  
256-level Grayscale (8-bit)  
Black and White (1-bit)

### Color Space

Normalized RGB

### Resolution

600 dpi (optical)

### Scan Accuracy\*\*

+/- 0.2%

### Maximum Image Width

**L36ei:** 36"; **L24ei:** 24"

### Maximum Media Width

**L36ei:** 38"; **L24ei:** 26"

# imagePROGRAF

## Lei Series

### Maximum Scan Length

109"

### Maximum Media Thickness

0.020" (5 mm)

### Digital Imaging Technology

Contact Image Sensor (CIS) Technology (SingleSensor Technology Assembly)

- Full width SingleSensor CIS Assembly
- 24-bit RGB digital color image capture
- 8-bit grayscale image capture
- Panchromatic monochrome and black and white
- Bi-directional extra long-life LED light system for optimum object illumination and instant-on scanning capability

### Scanner Interface

Scan to USB - USB2 interface  
(Flash drive max. size = 128 GB - FAT32)  
Copy/Scan to Network - Ethernet interface  
(>1 GB Ethernet connection for network configuration)

### Operating Environments

10 - 35°C, 35-80% RH, Non-condensing

### External Power Supply

100-240 VAC Autosensing +/- 10%, 50-60 Hz

### Scanner Power Consumption

- 11.7 W (Scanning)
- .06 W (Standby)

### Compliances

CB, CE, FCC, UL, ENERGY STAR®, ICES-003, CUL, S Mark

### Dimensions (H x W x D) (with Paper Tray Extended)

**L36ei:** 5.2" x 48.7" x 9.96"

**L24ei:** 5.2" x 36.8" x 9.96"

### Stand and Scanner Weight

**L36ei:** Approx. 14.5 lb.

**L24ei:** Approx. 11.6 lb.

### What's In The Box?

- Lei Scanner with Power Cord
- Ethernet Cable
- 2 Mounting Brackets
- CD for ScanApp Lei Software
- Lei Scanner Guide
- Document Return Guide
- Calibration Target
- Feet for Desktop Use
- Two Paper Edge Guides and Paper Refeed Preventers

\* The scan rate is proportional across the full range of resolutions supported by the scanner. Quoted top speeds may be limited by the effective bandwidth of the USB 2 and is not guaranteed for all media types.

\*\* The quoted scan accuracy may vary depending on the operating environment and the thickness of the media.

\*\*\* To be supported in December 2018.

■ Wireless printing requires a working network with wireless 802.11b/g or 802.11n capability. Wireless performance may vary based on terrain and distance between the printer and wireless network clients.

■ ScanApp Lei not available on Mac.

The imagePROGRAF MFP Lei systems contain multiple components, some of which are manufactured by third parties. To the extent that such third-party offerings come with limited warranties, such limited warranties are hereby passed to the purchaser, and Canon shall have no obligation or any liability with respect to such third-party offerings.



As an ENERGY STAR partner, Canon U.S.A., Inc. has certified these models as meeting the ENERGY STAR energy efficiency criteria through an EPA recognized certification body. ENERGY STAR and the ENERGY STAR mark are registered U.S. marks. Canon, imagePROGRAF, imageRUNNER, and the GENUINE logo are registered trademarks of Canon Inc. in the United States and may also be registered trademarks or trademarks in other countries. iPad is a registered trademark of Apple Inc. All other referenced product names and marks are trademarks of their respective owners. Specifications and availability subject to change without notice. Not responsible for typographical errors. ©2018 Canon U.S.A., Inc. All rights reserved.

0214W461  
0918-LeiBrochure-7.5M-PIH



Canon Mexicana S. de R.L. de C.V.

Torre Altiva, Blvd. M. Ávila Camacho No. 138

PB y pisos 11, 15, 16, 17, Col. Lomas de Chapultepec

Del. Miguel Hidalgo, Ciudad de México, C.P. 11000

www.canon.com.mx

